

SOLID-BOX

Elegant IP 66/IP 67 enclosure for industrial applications

Robust, waterproof and stylish – the new SOLID-BOX enclosure range satisfies all the requirements that a modern electronic/electrical housing must meet in industrial environments, as well as in protected outdoor areas.

- 3 enclosure sizes in 2 standard colors
- convincing design thanks to the modern, highly polished enclosure surface snap-on design trims in the top panel conceal all the fixing screws
- can be used as desktop and wall-mounted enclosures
- high IP 66/67 protection class and IK 08 impact protection offer safety – even in harsh environments; the seal is pre-fitted in the top part
- excellent, flame-retardant V-0 rated material (1.50 mm) with increased heat distortion temperature (Vicat/B 120 = 110°C), chlorine- and bromine-free flame resistance
- enclosure assembly with rust-proof, captured Torx screws outside the sealed interior
- 2 recessed areas in the bottom part for installation/protection of connectors, switches and other interfaces – easy and user-friendly to connect
- recessed operating area in the top for flush fitting a membrane keypad or product label
- screw channels under the design trims allow for direct, concealed wall mounting
- mounting points on the rear of sizes 145 and 175 match the hole patterns of VESA MIS-D 75/100
- integrated fastening pillars for PCBs, DIN rails and mounting plates
- accessory hinge set retains the top panel in situ during assembly and servicing
- enclosure feet kit (accessory) for non-slip positioning on a desktop

Special material

On request we can also custom mould many of our enclosures in special colours/materials to match your requirements exactly. For the new SOLID-BOX, for example, it would be possible to have the design trims injection-moulded in a different colour to code the function or device series, or even to have the whole enclosure in your company colour (minimum quantity and feasibility on request).

DESIGNER STATEMENT

"A SOLID-BOX delivers what its name promises. In this enclosure, watertight and particularly impact-resistant, your components can be placed stably and securely even in inhospitable environments, without visible screw connections or fasteners. And yet the design of the enclosures gives the robust construction an elegant lightness. The slightly sloping bevels surrounding the long sides and the interplay of light and shadow underline the quality of the product."

Martin Nussberger, polyform Industrie Design

SOLID-BOX



SOLID-BOX

Applications and Examples

Ideal for high-quality electronic and electrical equipment which is used indoors or in protected outdoor areas.

- Plant and machine construction
- Heating, air conditioning and ventilation technology
- IoT/IIoT
- Smart factory/Industry 4.0
- Gateways
- Data loggers
- Information and communications technology (ICT)
- Electrical installations
- Measuring and control technology
- Agriculture, farming
- Sensor systems
- Safety engineering



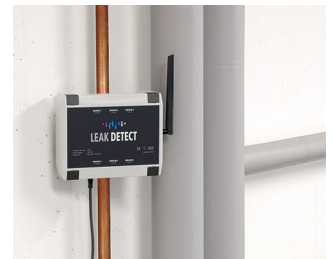
Camera control in production



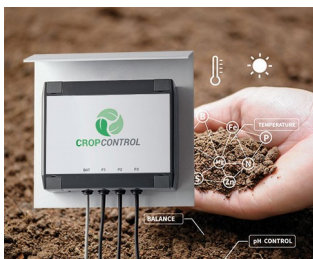
Data recording for harvesters



Heating/air conditioning/ventilation control



Leak detector



Smart Farming - system for long-term measurements



Temperature Manager



Voltage receiver



Weather station in agriculture

View Customizing Options

What do you still need for your own very personal product? We can supply enclosures and tuning knobs with all necessary modifications for fitting your electronic components.

Customizing options for Solid-Box

SOLID-BOX



Machining



Printing



Laser marking



Decor foils



RFI/EMI shielding



Installation / Assembly
of accessories

Select Versions



C8011131
SOLID-BOX 115
PC+ABS (UL 94 V-0)
anthracite gray RAL 7016
5.31"x4.53"x1.97"
IP 66, IP 67, IK 08



C8011132
SOLID-BOX 115
PC+ABS (UL 94 V-0)
light gray RAL 7035
5.31"x4.53"x1.97"
IP 66, IP 67, IK 08



C8014181
SOLID-BOX 145
PC+ABS (UL 94 V-0)
anthracite gray RAL 7016
7.09"x5.71"x2.36"
IP 66, IP 67, IK 08



C8014182
SOLID-BOX 145
PC+ABS (UL 94 V-0)
light gray RAL 7035
7.09"x5.71"x2.36"
IP 66, IP 67, IK 08



C8017221
SOLID-BOX 175
PC+ABS (UL 94 V-0)
anthracite gray RAL 7016
8.86"x6.89"x2.76"
IP 66, IP 67, IK 08



C8017222
SOLID-BOX 175
PC+ABS (UL 94 V-0)
light gray RAL 7035
8.86"x6.89"x2.76"
IP 66, IP 67, IK 08

SOLID-BOX

Accessory "wall/holder"



C2299031
Securing hinge for the cover
PP
natural-colored



C8100360
Internal hinge set

Accessory "screws"



A0308132
Self-tapping screw 0.118" x
0.315" (T10)
Stainless steel

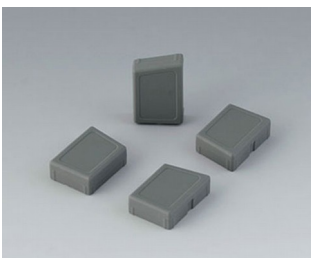


A0399T10
Torx T10 screwdriver



A0399T20
Torx T20 screwdriver

Accessory



C8100188
Set of enclosure feet
SEBS (TPE)
volcano

Subject to technical modification without notice. © by OKW Gehäusesysteme, Buchen/Germany.