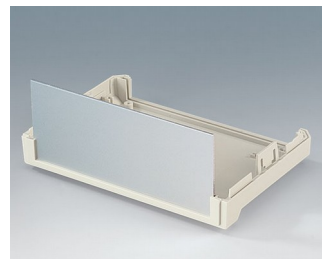
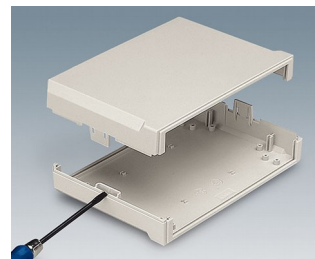
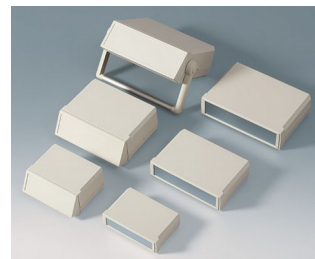


# MOTEC

## Modern desktop enclosures with wide front panels

With its generous dimensions, stylish design and ergonomic control panels, our MOTEC series is designed to distinguish your electronics from more conventional systems.

- stylish range of instrument enclosures
- three plan sizes
- different case heights for individual configurations
- high-quality material ABS (UL 94 HB)
- robust clip-together assembly to minimize your assembly work
- access with flat screwdriver only, for security
- ergonomic, molded sloping control panel with recessed area for a membrane keypad
- aluminum panels ordered separately
- versions with handle for ergonomically tilted position or carrying
- four non-slip self-adhesive feet included
- protection class IP 40
- internal guide grooves for the vertical insertion of partitions and PCBs
- internal screw pillars for PCBs etc.



# MOTEC

## Applications and Examples

- Measuring and control technology
- Feedback control
- Peripheral devices and interfaces, switchboxes, modems
- Laboratory equipment
- Medical and wellness devices



Rhinospirometer



Telemetry system with cordless sensors

## View Customizing Options

What do you still need for your own very personal product? We can supply enclosures and tuning knobs with all necessary modifications for fitting your electronic components. Customizing options for Motec



Machining



Lacquering



Printing



Laser marking



Decor foils



Special material



RFI/EMI shielding



Installation / Assembly  
of accessories

# MOTEC

## Select Versions



**B3015117**  
MOTEC S, flat/flat  
ABS (UL 94 HB)  
off-white RAL 9002  
6.10"x4.13"x1.57"  
IP 40



**B3015127**  
MOTEC S, flat/high  
ABS (UL 94 HB)  
off-white RAL 9002  
6.10"x4.13"x2.56"  
IP 40



**B3015137**  
MOTEC S, high/high  
ABS (UL 94 HB)  
off-white RAL 9002  
6.10"x4.13"x3.54"  
IP 40



**B3020117**  
MOTEC M, flat/flat  
ABS (UL 94 HB)  
off-white RAL 9002  
8.07"x5.51"x1.97"  
IP 40



**B3020127**  
MOTEC M, flat/high  
ABS (UL 94 HB)  
off-white RAL 9002  
8.07"x5.51"x2.95"  
IP 40



**B3020137**  
MOTEC M, high/high  
ABS (UL 94 HB)  
off-white RAL 9002  
8.07"x5.51"x3.94"  
IP 40



**B3020147**  
MOTEC M, with handle bar  
ABS (UL 94 HB)  
off-white RAL 9002  
8.07"x5.51"x2.95"  
IP 40



**B3023117**  
MOTEC-L, flat/flat  
ABS (UL 94 HB)  
off-white RAL 9002  
9.25"x6.50"x2.36"  
IP 40



**B3023127**  
MOTEC L, flat/high  
ABS (UL 94 HB)  
off-white RAL 9002  
9.25"x6.50"x3.35"  
IP 40



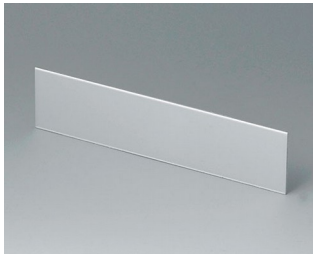
**B3023137**  
MOTEC L, high/high  
ABS (UL 94 HB)  
off-white RAL 9002  
9.25"x6.50"x4.33"  
IP 40



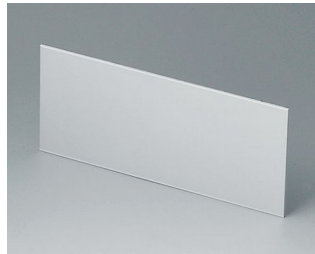
**B3023147**  
MOTEC L, with handle bar  
ABS (UL 94 HB)  
off-white RAL 9002  
9.25"x6.50"x3.35"  
IP 40

# MOTEC

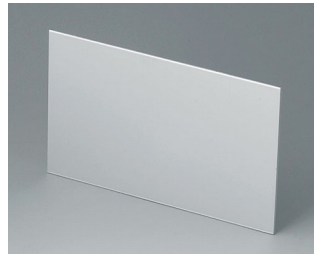
## Accessory to complete



**B3115100**  
Front / rear panel S  
Aluminum  
matt anodized  
5.35"x1.26"x0.06"



**B3115110**  
Front / rear panel S  
Aluminum  
matt anodized  
5.35"x2.24"x0.06"



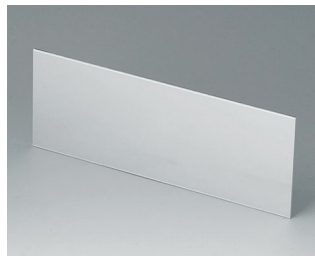
**B3115120**  
Front / rear panel S  
Aluminum  
matt anodized  
5.35"x3.23"x0.06"



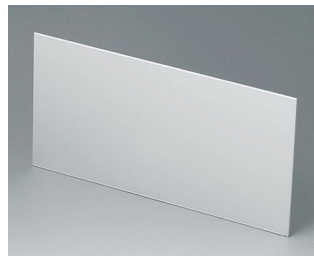
**B3115167**  
Sloping control panel S, flat/high  
ABS (UL 94 HB)  
off-white RAL 9002



**B3120100**  
Front / rear panel M  
Aluminum  
matt anodized  
7.28"x1.65"x0.06"



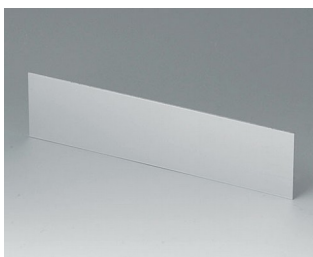
**B3120110**  
Front / rear panel M  
Aluminum  
matt anodized  
7.28"x2.64"x0.06"



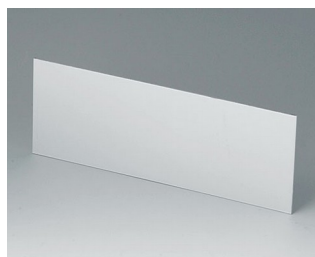
**B3120120**  
Front / rear panel M  
Aluminum  
matt anodized  
7.28"x3.62"x0.06"



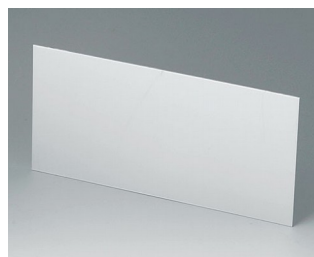
**B3120167**  
Sloping control panel M, flat/high  
ABS (UL 94 HB)  
off-white RAL 9002



**B3123100**  
Front / rear panel L  
Aluminum  
matt anodized  
8.43"x2.05"x0.06"



**B3123110**  
Front / rear panel L  
Aluminum  
matt anodized  
8.43"x3.03"x0.06"



**B3123120**  
Front / rear panel L  
Aluminum  
matt anodized  
8.43"x4.02"x0.06"



**B3123167**  
Sloping control panel L, flat/high  
ABS (UL 94 HB)  
off-white RAL 9002



**B3123177**  
Sloping control panel L,  
high/high  
ABS (UL 94 HB)  
off-white RAL 9002

# MOTEC

## Accessory "screws"



A9199008  
Set of screws

Subject to technical modification without notice. © by OKW Gehäusesysteme, Buchen/Germany.