

NET-BOX

Wall mount enclosures for control units

NET-BOX plastic enclosures have a slim design and stylish curved top section, this makes these modern and elegant housings perfect for wall mounted control units, network nodes and much more.

- three sizes with plenty of room for electronics and interfaces
- the connectors and cables are hidden under the front lid
- the cases are molded in flame retardant material and can be sealed to IP 65
- simple three part assembly - bottom part, front cover and front lid; there are no visible screws on the front, just two on the underside of the lid
- screw pillars are provided in the bottom part for mounting PCBs and assemblies
- optional infill covers close the underside opening and can be used for fitting additional PCBs or assemblies
- three point wall mounting system - no need to open the main electronics section, only the front lid has to be refitted after installation (version II already has openings in the bottom part)
- supplied with anti-tamper Torx T10 assembly screws
- NET-BOX cases can also be used as desktop units, accessory non-slip feet are available



NET-BOX

Applications and Examples

- Building management
- Central control units
- IoT/IIoT
- Smart Factory
- Industry 4.0
- Gateways
- Data acquisition systems
- Data systems engineering
- Measuring and control technology
- Supervision terminals and access control
- Medical and wellness technology



Esystop flow water stop system



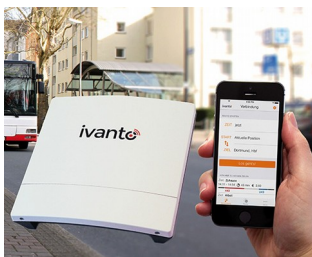
Gateway for the automation of production plants



Industrial Router



Intelligent Irrigation System



IT for urban mobility



Measuring station for stationary field measurements



Sauna control



Signal lamp



Telecommunications station for independent professionals

View Customizing Options

What do you still need for your own very personal product? We can supply enclosures and tuning knobs with all necessary modifications for fitting your electronic components.
Customizing options for Net-Box

NET-BOX



Machining



Lacquering



Printing



Laser marking



Special material



RFI/EMI shielding



Installation / Assembly
of accessories

Select Versions



B3214101
NET-BOX 140, Vers. I
ASA+PC (UL 94 V-0)
light gray RAL 7035
5.51"x5.51"x1.83"
IP 65 opt., IP 40



B3214201
NET-BOX 140, Vers. II
ASA+PC (UL 94 V-0)
light gray RAL 7035
5.51"x5.51"x1.83"
IP 65 opt.



B3218101
NET-BOX 180, Vers. I
ASA+PC (UL 94 V-0)
light gray RAL 7035
7.09"x7.09"x1.91"
IP 65 opt., IP 40



B3218201
NET-BOX 180, Vers. II
ASA+PC (UL 94 V-0)
light gray RAL 7035
7.09"x7.09"x1.91"
IP 65 opt.



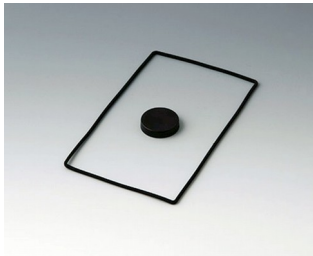
B3222101
NET-BOX 220, Vers. I
ASA+PC (UL 94 V-0)
light gray RAL 7035
8.66"x8.66"x1.99"
IP 65 opt., IP 40



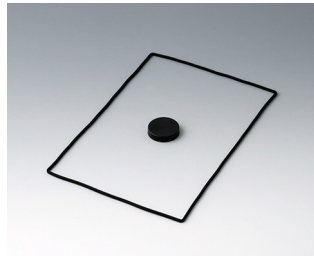
B3222201
NET-BOX 220, Vers. II
ASA+PC (UL 94 V-0)
light gray RAL 7035
8.66"x8.66"x1.99"
IP 65 opt.

NET-BOX

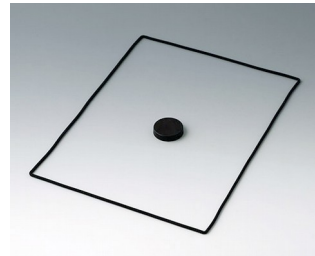
Accessory "protection"



B3314159
Sealing kit 140
Silicone
black



B3318159
Sealing kit 180
Silicone
black



B3322159
Sealing kit 220
Silicone
black

Accessory "screws"



A0306031
Self-tapping screws 0.118" x
0.236" (PZ1)

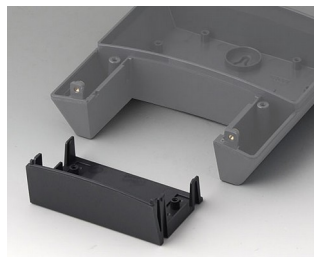


A0399T10
Torx T10 screwdriver

Accessory



A9207150
Anti-slide feet 0.256" x 0.079"
transparent



B3314918
Infill cover 140
ASA+PC (UL 94 V-0)
lava



B3318918
Infill cover 180
ASA+PC (UL 94 V-0)
lava



B3322918
Infill cover 220
ASA+PC (UL 94 V-0)
lava

Subject to technical modification without notice. © by OKW Gehäusesysteme, Buchen/Germany.